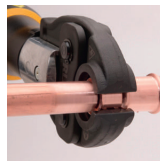


Showcase Shuffle



Elitech

Elite Technology Inc.'s SVP-7/SVP-9/SVP-12 intelligent vacuum pump has intelligent control of its motor and solenoid valve and allows the user to conduct system leakage level analysis. The 4 in. smart touch full-color screen shows the user real-time changes on the vacuum through graphs as well estimated job completion time. Data monitoring and analysis is available via app as well. Elitech is a global manufacturer that has dedicated over 25 years to the R&D and manufacturing of HVAC/R tools. **Circle 115 on the reader service card.**



RLS Press Fittings

Rebates up to \$1,000 on RLS Press Tools/Jaws and Fittings! For a limited time, get a \$500 rebate on select tool and jaw sets, and up to a \$1,000 rebate on fittings when purchased from any authorized RLS distributor in North America. Now is the perfect time to start saving time—and making more money—with RLS HVAC/R press fittings! **Circle 119 on the reader service card.**



Fieldpiece Instruments

These two new Fieldpiece leak detectors are highly sensitive, durable, and more reliable than anything else on the market. The new models feature a large LCD that displays leak information with bar graphs and numerical values. Leaks trigger a lighted tip and audible alarm. The rechargeable batteries enable 10–18 hours of use per charge. Visit www.fieldpiece.com. **Circle 116 on the reader service card.**



Sanhua International

With just a few components on the truck, contractors can replace thousands of TXV variations they encounter. One control kit and five EEVs replace thousands of refrigeration TXVs! SEC Superheat Control Kit includes controller, temp sensor, pressure transducer and 5-wire stator. Enjoy faster system pulldown, easy installation and significant energy savings. **Circle 120 on the reader service card.**



Fujitsu General America

Fujitsu General America has introduced the Infinite Comfort Series consisting of new multi-position air handler units that combine Fujitsu's inverter heat pump technology and revolutionary side discharge outdoor units with a modular design indoor unit. The result is high efficiency, space saving, and quiet single-zone systems without compromise. **Circle 117 on the reader service card.**



TSI

Expand Your Indoor Air Quality Investigations. Having a multi-parameter IAQ instrument that can be configured, customized and expanded to monitor and maintain optimal indoor air quality is important. With the new Q-Trak XP Indoor Air Quality Monitor, you can measure up to 20 IAQ measurements simultaneously, up to six gases, and more. To learn more, visit tsi.com. **Circle 121 on the reader service card.**



MARS/Heat Controller

MARS/Heat Controller has one of the largest inventories of Commercial Water Source Heat Pumps available - from .5 Ton–10 Ton in stock, and larger units built-to-order. Available in vertical, horizontal, and console applications; in 208/230V, 265V, 460V, and 575V configurations; and in both standard and extended range. Visit www.comfort-aire.com. **Circle 118 on the reader service card.**



WaterSaber Tool Co.

The Water Saber Pro is easy to use and attaches to a standard garden hose without the need for special adapters or attachment. It uses the existing water supply pressure to clean the coil, opposite its normal airflow, fitting through existing openings in the unit. With its special 90-degree jet spray, it has plenty of power to remove dirt, grime and debris without the need of chemicals. Manufactured with Heavy Duty 304 Stainless Steel and TIG welds it has a Lifetime Warranty. Visit www.WaterSaber.com for details. **Circle 122 on the reader service card.**